



FOR YOUTH DEVELOPMENT®
FOR HEALTHY LIVING
FOR SOCIAL RESPONSIBILITY

YMCA OF THE INLAND NORTHWEST 2022 ANNUAL REPORT

Spotlight

A Message from the President & CEO and Board Chair

Looking back on 2022 there are so many successes, programs provided, and people served in our community, on which to shine our spotlight. It was a year of triumphs and challenges alike. We saw a robust recovery for mission programs and membership, and new team members brought excitement and enthusiasm to put our mission into practice each day. But we also learned how to show up and deliver with fewer staff as we faced the staffing challenges that exist today.

As our world and community changes, so must we change with it. With a mission dedicated to serving all it was the right time to expand our Diversity, Equity, and Inclusion efforts with renewed leadership and focus on how the YMCA represents our values and mission by giving everyone the chance to learn, grow, and thrive. We put that into action by purchasing diverse books and toys for children in our care, by creating a Welcome membership for recent immigrants getting settled, by giving children and individuals of all abilities the opportunity to learn to swim, and by committing to educating staff teams on ways to put Diversity, Equity and Inclusion into practice, to name but a few.

We continued to be humbled by meaningful investments toward the mission work we provide in the form of grants totaling nearly two million dollars. Grants and local community support strengthens our ability to say Yes to those who need the YMCA most whether through the Membership For All program or financial assistance for programs such as youth sports, child care, swim lessons, camp and more.

Being a local nonprofit means we are part of a larger community of organizations all with the shared vision of helping people thrive. Our community partners allow us to be a thread in the fabric which wraps around those of all ages and backgrounds. The YMCA of the Inland Northwest has been that thread through decades and now centuries since its inception in the region back in 1884.

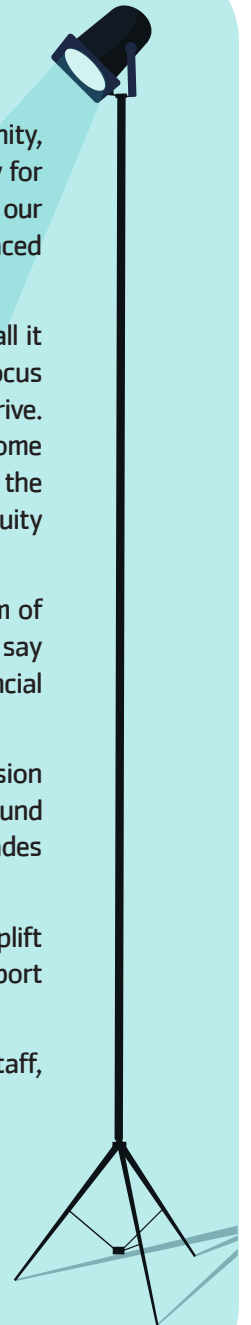
The years change but our mission and heart for this community will remain steadfast, here to support, uplift and inspire. This year was a chapter in the unfinished book that will add richness and community support throughout the decades to come.

As we focus our spotlight ahead to 2023, we will continue to find and champion those members, staff, volunteers, and community members who make all this work possible and a joy.

In appreciation,

Alan Leshner
President & CEO

Cora Whitney
Corporate Board Chair

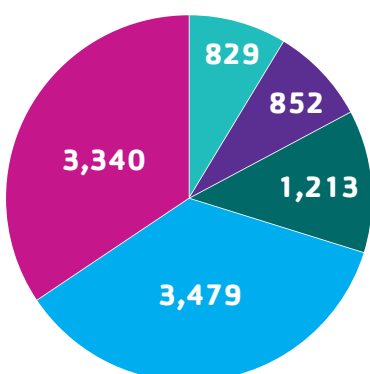


Volunteer Totals

1,016 Volunteers contributed **82,060** hours
Equal to **\$2,457,697** in community impact.

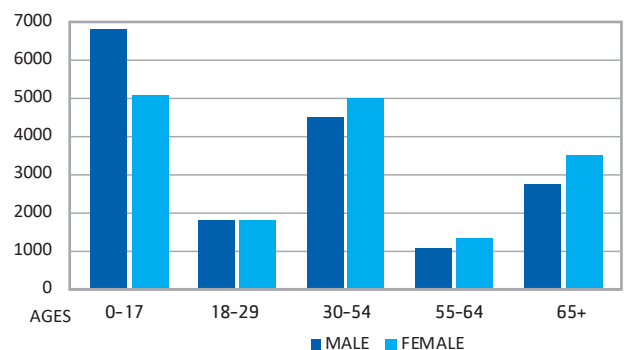
Policy Volunteers **115** Program Volunteers **901** Total **1,016**

Program Participants

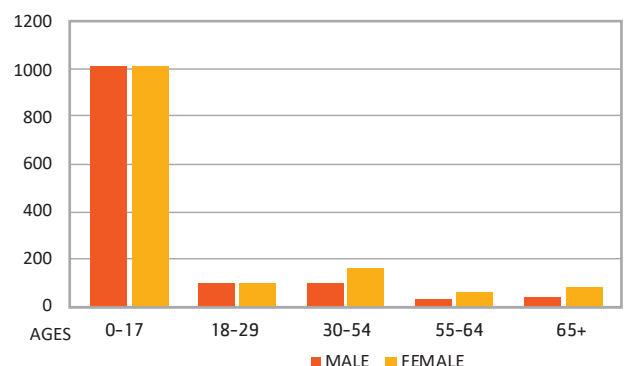


- Before and After School Program
- Summer Day Camp
- Youth Swim Lessons
- Youth Sports
- Camp Reed

YMCA MEMBER DEMOGRAPHICS



PROGRAM PARTICIPANT DEMOGRAPHICS



YMCA OF THE INLAND NORTHWEST CORPORATE & ADVISORY BOARDS

CORPORATE BOARD

Gregg Amend
Katie Burton
Allison Connelly
Dave Cotton
Bryan Cox
John Craig
Brennan Floyd
Kyndra Gamache
Shayne Goff
Juliet Groth
George Hampton
Todd Harnetiaux
Greg Hesler
Jerid Keefer
Ben Krauss
Dale McLaughlin
Jim Morrison
Heidi Moser
KayCee Murray
Mark Neupert
Suzanne O'Neil
Bill Perry
Kendon Perry
Mark Phillips
Robert Schwartz
Cameron Schwehr
Steve Utt
Judi Walker
Cora Whitney
Steve Wilcox

CENTRAL ADVISORY BOARD

Steve Felker
Dustin Howie
Nicole Parker
Molly McLeish
Kelly Sylvester
Tina Turner

NORTH ADVISORY BOARD

Paul Ellyson
Karen McPherson
Matt Michels
Marcus Riccelli
Patrick Schmidt

LITEHOUSE ADVISORY BOARD

Bill Aitken
Dig Chrismer
Derek Christensen
Kendon Perry
Kelly Prior
Angelina Roberts
Gwen Victorson
Mary Weber-Quinn

SOUTH ADVISORY BOARD

Jake Closson
Brennan Floyd
Maureen Herr
Greg Lagreid
Carol Weigand

VALLEY ADVISORY BOARD

Tricia Anderson
Lauri Clark-Strait
Peggy Doering
Scott Endres
Rich Hagelin
Kyle Janke
Ryan Mulvey
Stephanie Wetzel
Alec Wilson

CAMP REED ADVISORY BOARD

Todd "Kuna" Adolphson
Kathleen "Kanga" Arnold
Zach "Vator" Cleary
Allison "Anaconda" Connelly
Kyndra "Fire" Gamache
Ryan "Rookie" Harnetiaux
Darci "Dingle" Hastings
Amy "Flamingo" Nichols
Mima "Woolly" Scarpelli
Molly "Hot Ta" Schemmel
Steve "Sneaker" Smith
Larry "Lightning" Soehren

2022 FINANCIALS

YMCA of the Inland Northwest

Condensed Statement of Financial Position as of 12/31/22*

ASSETS

Cash, Receivables, Prepaids, Inventories \$9,563,440
Pledges Receivable (Net) \$148,493
Property & Equipment \$33,391,963
Total Assets \$43,103,896

LIABILITIES

Payables, Deferred Revenue \$1,853,786
Notes Payable & Long Term Debt \$12,525,071
Total Liabilities \$14,378,857

Net Assets \$28,725,039
Total Liabilities & Net Assets \$43,103,896

* Unaudited

YMCA of the Inland Northwest

Condensed Statement of Activities as of 12/31/22*

REVENUE

Contributions \$710,041
United Way \$56,000
Government Grants \$2,561,701
Membership \$7,526,864
Program \$3,479,155
Other Revenue \$1,186,095
Total Revenue \$15,519,856

EXPENSE

Program Services \$15,356,892
Support Services (Incl Capital Campaign)..... \$1,982,181
Total Expenses..... \$17,339,073
Net Before Depreciation (\$1,819,217)
Depreciation & Amortization \$883,345
Increase(Decrease) in Net Assets (\$2,702,562)

* Unaudited

YMCA of the Inland Northwest Endowment Fund

Condensed Statement of Financial Position as of 12/31/22*

ASSETS

Cash \$910
Investments \$1,783,267
Total Assets \$1,784,177

LIABILITIES & NET ASSETS

Liabilities
Payables \$0

Net Assets \$1,784,177
Total Liabilities & Net Assets \$1,784,177

* Unaudited

Financial Assistance 2022

Program & Membership Assistance for All Branches

Requests Granted: 33,012
Value: \$851,973

Other Programs

Early Child Care

Requests Granted: 233
Value: \$18,862

School Age Programs

Requests Granted: 463
Value: \$109,817

Youth Sports

Requests Granted: 40
Value: \$1,373

Camp Reed

Requests Granted: 238
Value: \$80,242

Association Total

Requests Granted: 33,986
Value: \$1,062,267

Grants Received in 2022

Aging & Long Term Care of

Eastern Washington

Angels Over Sandpoint

Avista Foundation

Baker Foundation

Community Cancer Fund

Equinox Foundation

Johnston-Hanson Foundation

Kalispell Tribe

Kroger Foundation

NEA-ARP Grant - Sandpoint

Pierce Charitable Trust

Providence Foundation

Spokane Bike Swap

Spokane County United Way

Spokane County Developmental

Disabilities Administration

Spokane Parks Foundation

Walmart

Washington State Department

of Children, Youth & Families

WSDA Farm to Early Learning

YUSA Camp Access 2022

YUSA Food 2022

YUSA Food Bonus 2022

YUSA Swim

